

# Municipal Design and Construction Case study in the Mill River Watershed

---

Nicole Davis,  
Watersheds  
Project Manager  
Save the Sound

Stephen White, PE  
Town Engineer/LTA  
Hamden



# Town Center Park Bioretention System

- System overview
- Challenges
- Community Involvement
- Remember to celebrate



**Slide 2**

---

**GUO**

Add photo of volunteer planting?

Guest User, 2024-03-19T20:57:57.099



# Town Center Park Bioretention System

73.75 Acre mixed residential commercial watershed.

Captures first inch of runoff.



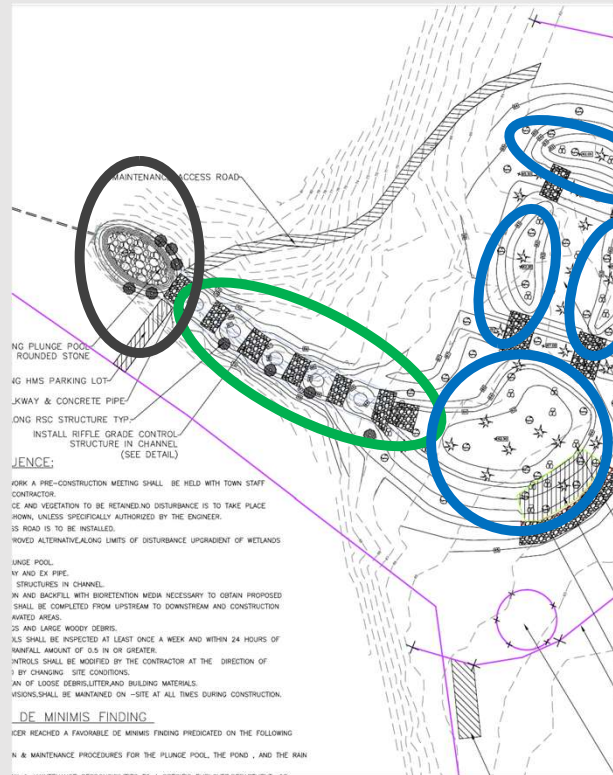
I'm a Rain Garden





# Town Center Park Bioretention System

- Plunge Pool
- Regenerative Stormwater Conveyance (step pools)
- Bioretention Cells

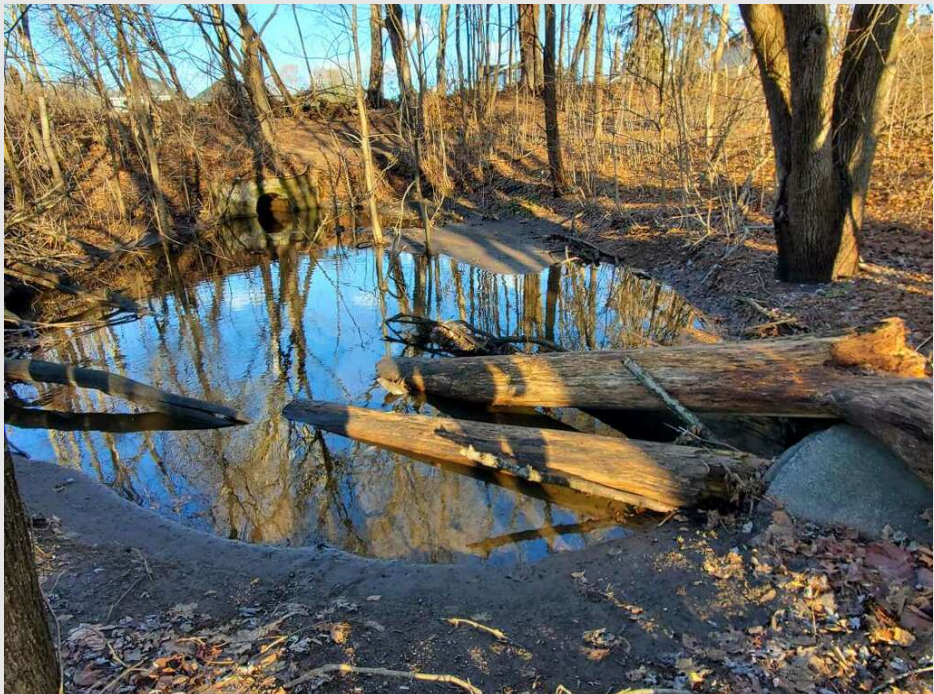


PROPOSED SILT FENCE, TYP. (SEE DETAIL)





# Town Center Park Bioretention System Before





# Town Center Park Bioretention System

**Before**



**During**



**After**







**Before**

**During**



**After**





# Town Center Park Bioretention System





# The Summer of Springs





# The Summer of Springs





# Excavator takes an early retirement



# Japanese Knotweed

*Polygonum cuspidatum*

Hamden Town Center Park – Knotweed June 2023

- Original Knotweed stand
- Knotweed root fragments



Disabled Excavator







# PLANTING DAY

**Hamden Town Center Park  
Sunday, October 1  
12 PM - 3 PM**

Help us plant native flowers, shrubs, and grasses in our four acre rain garden!





# Celebrate Your Success!



# Alice Peck Rain Garden





# Future Projects

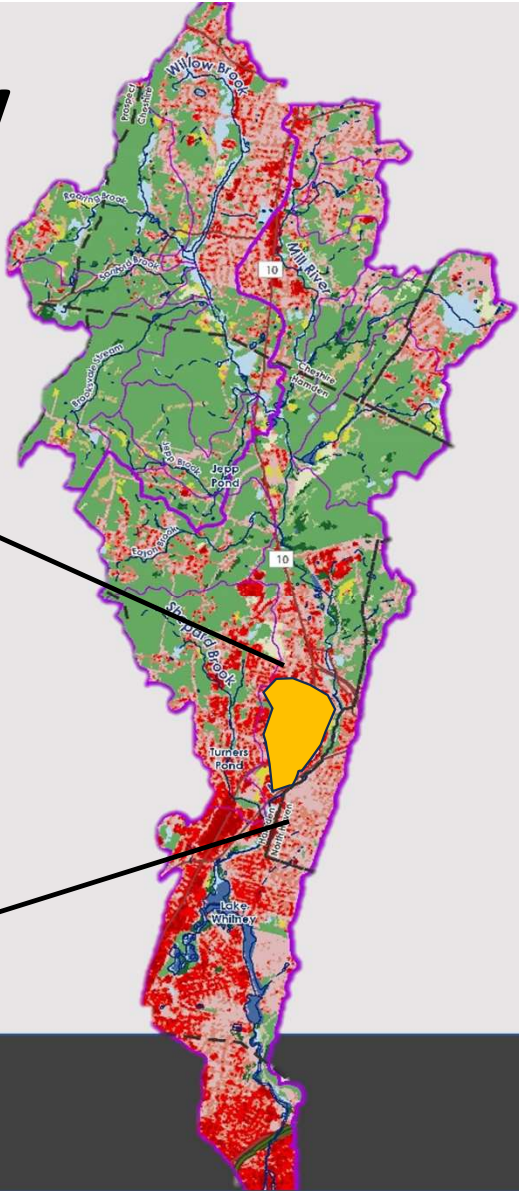


## Westwood's Neighborhood Bioswales





# Pardee Brook Watershed Study





# Thank you!

**Nicole Davis**  
[ndavis@savethesound.org](mailto:ndavis@savethesound.org)

**Stephen White**  
[swhite@hamden.com](mailto:swhite@hamden.com)



**Save the Sound<sup>®</sup>**  
Action for our region's environment.



**Connecticut**  
Department of Energy &  
Environmental Protection



## Slide 18

---

**GUO** not sure of best fit for our logo, but its at least in slide now :)  
Guest User, 2024-03-29T15:27:23.625